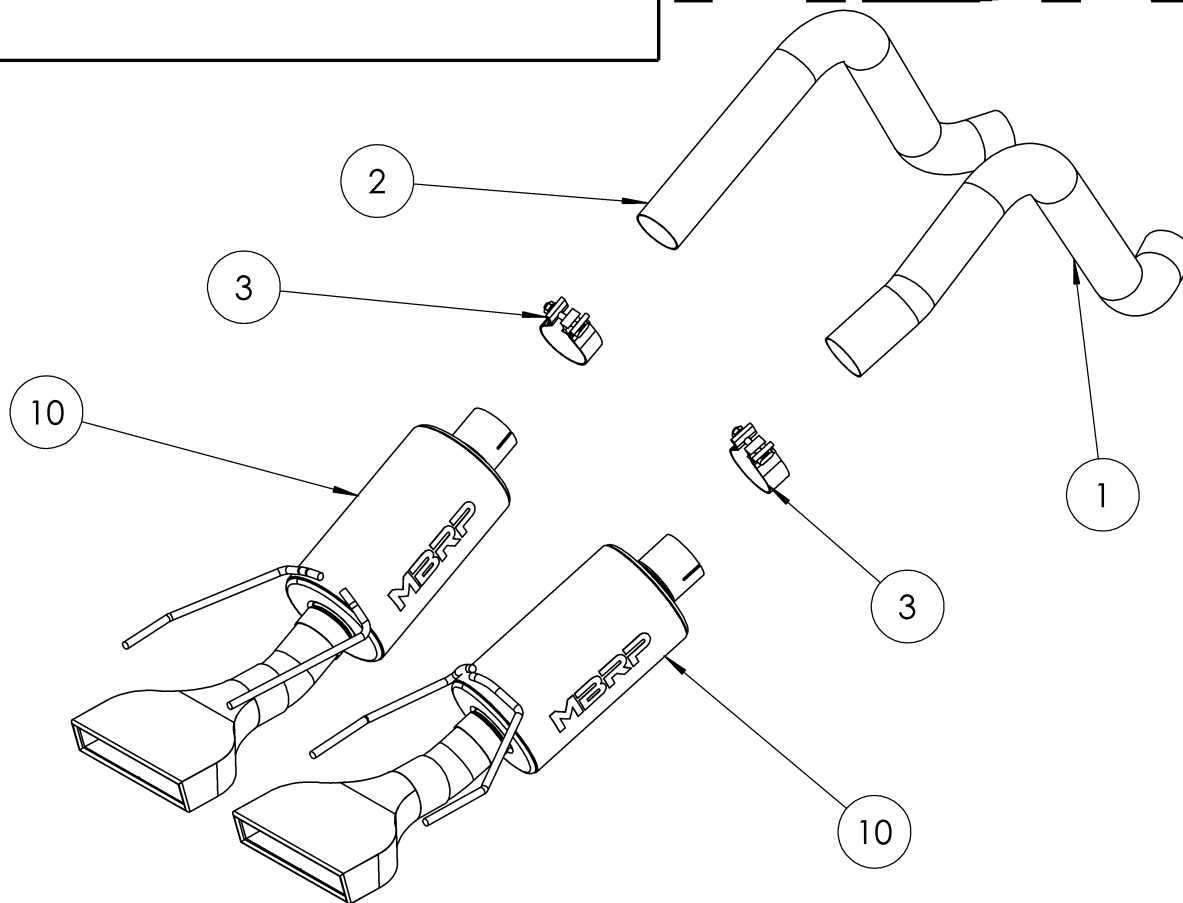


S7002

2005-2008 CHEVROLET CORVETTE,
C6, 6.0L, AXLE BACK DUAL MUFFLER

MBRP®



ITEM	DESCRIPTION	QTY
1	PASSENGER SIDE OVER AXLE PIPE	1
2	DRIVER SIDE OVER AXLE PIPE	1
3	2.5" CLAMP	2
4	DRIVER SIDE MUFFLER	1
5	PASSENGER SIDE MUFFLER	1

Refer to this LOT NUMBER when contacting customer service: _____

PLEASE READ BEFORE STARTING INSTALLATION

While MBRP has made every effort to ensure that all components of this system are of superior quality and properly packaged, it is the installer's responsibility to ensure the following before removal of the factory exhaust:

- that ALL components shown above are present.
- that ALL mating components fit together.
- that there are no damaged components.
- that the system you have purchased is appropriate for your vehicle year, model and configuration.
- that the system will not interfere with any modifications previously installed or planned.
- that you have read and understand these instructions.

If you have any questions or are uncertain about any aspect of the installation of this system to your vehicle please contact your dealer before commencing installation.

MBRP

Removal of Stock System

1. Apply a penetrating lubricant liberally to all exhaust fasteners, hangers, and rubber insulators.
2. Remove the bushings holding the anti-sway bar to the rear sub frame and move the anti- sway bar down. This will create more room to remove the factory mufflers.
3. Loosen the band clamp located just in front of the rear axle on both the driver and passenger side.
4. Remove the bolts retaining the rubber insulators and remove the muffler assembly from the vehicle. Do not discard the bolts or the insulators as they are required for the installation of the **MBRP** mufflers.

Installation of MBRP Performance Exhaust:

1. Slide the expanded end of the **Driver Side Over Axle Pipe** from the rear of the car, over the rear axle following the same path as the factory exhaust. Slip the expanded end over the factory exhaust.
2. Install the rubber insulators previously removed onto the hangers welded onto the **Driver Side Muffler**.
3. Slide a **2.5" Band Clamp** over the **Driver Side Over Axle Pipe**. Now slip the **Driver Side Muffler** onto the **Driver Side Over Axle Pipe**.
4. Move the **Driver Side Muffler** into place and attach the rubber insulators using the bolts previously removed.
5. Repeat steps 2-4 for passenger side.
6. Carefully align the system and tips. Align the edge of each band clamp with the edge of the joint it is connecting. Tighten all hardware and clamps, starting at the front and working rearward to secure the system. Check along the full length of the exhaust system to ensure there is adequate clearance for fuel lines, vent lines, brake lines, frame, bodywork, suspension, and any wiring, etc. If there is any interference detected, relocate, or adjust to provide adequate clearance. Ensure all clamp connections are secure and components are unable to rotate or slide. Band clamps require approximately 45 lb-ft (60 N-m) of torque. Verify clearances, system security and band clamp torque after 30-60 miles (50-100 km) of driving.

Congratulations! You are ready to begin experiencing the improved power, sound and driving experience of your **MBRP** Performance Exhaust. We know you will enjoy your purchase!